



Sample Information

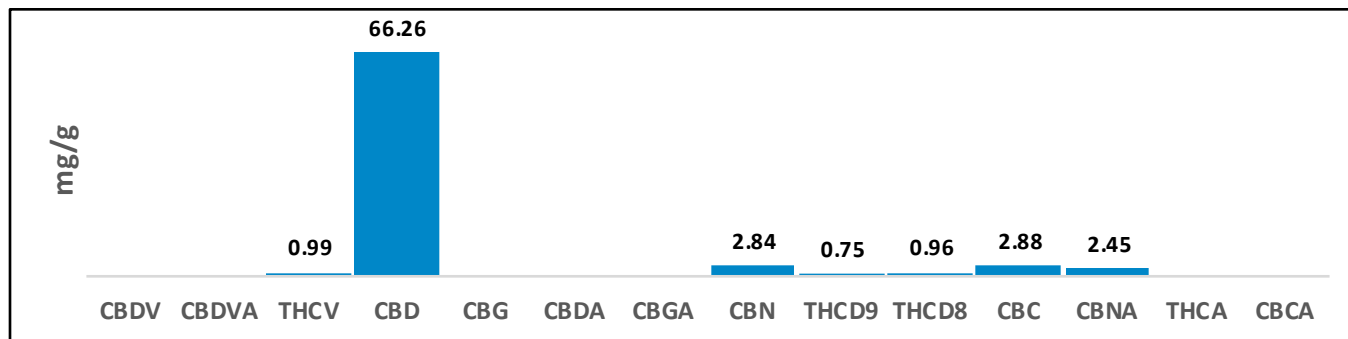
Test Date:	Feb 2, 2021, 2:28 PM	Sample Type:	Topicals
Sample / Strain Name:	WO Muscle Gel 3000	IL Unique ID:	ILCTS720-2
Lot # / Batch ID:	29A2118B		
Sample Description:	Orange cream		
Notes:	Unit weight is 2 oz bottle = 60 grams		
Analyst Name:	Enrique Orci IV	Reviewer Name:	Ted Barton
Analyst Signature:	<i>Enrique Orci IV</i>	Reviewer Signature:	<i>Ted Barton</i>

Cannabinoid Potency and Profile

Cannabinoid	Result (%)	Result (mg/g)	mg / bottle
CBDV	N/D	N/D	N/D
CBDVA	N/D	N/D	N/D
THCV	0.10%	0.99	59.40
CBD	6.63%	66.26	3975.60
CBG	N/D	N/D	N/D
CBDA	N/D	N/D	N/D
CBGA	N/D	N/D	N/D
CBN	0.28%	2.84	170.40
THCD9	0.07%	0.75	45.00
THCD8	0.10%	0.96	57.60
CBC	0.29%	2.88	172.80
CBNA	0.24%	2.45	147.00
THCA	N/D	N/D	N/D
CBCA	N/D	N/D	N/D
Totals	7.71%	77.13	4627.80



Total THC %	0.07%
Total THC mg / bottle	45.00
Total CBD %	6.63%
Total CBD mg / bottle	3975.60



THC Total = % of THCD9 + (% of THCA x 0.877), CBD Total = % of CBD + (% of CBDA x 0.877), CBG Total = % of CBG + (% of CBGA x 0.876), CBN Total = % of CBN + (% of CBNA x 0.876), CBC Total = % of CBC + (% of CBCA x 0.877), CBDV Total = % of CBDV + (% of CBDVA x 0.867), N/D = Not Detected

** Bud/Flower potency results are presented on a dry weight basis

Testing results are based solely upon the samples submitted to Ionization Labs, LLC. Ionization Labs warrants that all analytical work is conducted in accordance with all applicable standard laboratory practices using validated methods. This report may not be reproduced without the written consent of Ionization Labs.

ISO 17025 Accredited
A2LA Certificate #: 5756.01
Texas Dept of Ag Account #: TL2020003



KCA Laboratories
232 North Plaza Drive
Nicholasville, KY 40356

(833) 522-5227
https://kcalabs.com
KCA Lic # P_0058

Certificate of Analysis

1 of 4

1060418-2020-TF-06-TFD-01

Sample ID: 2012KCA0759.2335

Cultivar: N/A

Matrix: Concentrates & Extracts

Type: Distillate

Sample Size:

Received: 12/07/2020

Completed: 12/16/2020

Batch#: TF-06-DIS

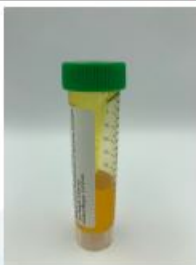
Client

Deschutes Labs

Lic # AG-R1060418IHH Oregon

2020 NW Industrial Park Rd

Prineville, OR 97754



Summary

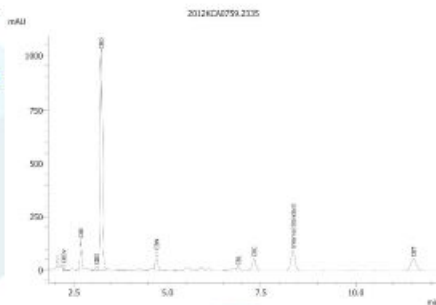
Test	Date Tested	Result
Cannabinoids	12/09/2020	Complete
Residual Solvents	12/16/2020	Complete
Pesticides	12/11/2020	Complete
Heavy Metals	12/09/2020	Complete

Cannabinoids by HPLC-PDA

Complete

ND	63.7867%	71.1140%	NT Not Tested	Not Tested
Total THC	Total CBD	Total Cannabinoids	Moisture Content	Foreign Matter

Analyte	LOD	LOQ	Result	Result
	%	%	%	mg/g
CBC	0.0095	0.0284	2.9371	29.371
CBCA	0.0181	0.0543	ND	ND
CBVC	0.0060	0.0180	ND	ND
CBD	0.0081	0.0242	63.7867	637.867
CBDA	0.0043	0.0130	ND	ND
CBDV	0.0061	0.0182	0.6696	6.696
CBDDVA	0.0021	0.0063	ND	ND
CBG	0.0057	0.0172	0.6966	6.966
CBGA	0.0049	0.0147	ND	ND
CBL	0.0112	0.0335	0.7594	7.594
CBLA	0.0124	0.0371	ND	ND
CBN	0.0056	0.0169	2.2646	22.646
CBNA	0.0060	0.0181	ND	ND
Δ8-THC	0.0104	0.0312	ND	ND
Δ9-THC	0.0076	0.0227	ND	ND
THCA	0.0084	0.0251	ND	ND
THCV	0.0069	0.0206	ND	ND
THCVA	0.0062	0.0186	ND	ND
Total THC			63.7867	637.867
Total CBD			71.1140	711.140
Total				



Total THC = THCA * 0.877 + Δ9-THC
Total CBD = CBDA * 0.877 + CBD

LOD = Limit of Detection

LOQ = Limit of Quantitation

ND = None Detected

For plant material, the reported result is based on a sample weight with the applicable moisture content for that sample.



Wes Rogers

Wes Rogers
Principal Scientist
12/16/2020



ISO/IEC 17025:2017 Accredited
Accreditation #20601

This product or substance has been tested by KCA Laboratories using validated testing methodologies and a quality system. Values reported relate only to the product or substance tested. KCA Laboratories makes no claims as to the efficacy, safety or other risks associated with any detected or non-detected amounts of any substances reported herein. This Certificate of Analysis shall not be reproduced except in full, without the written approval of KCA Laboratories.



KCA Laboratories
232 North Plaza Drive
Nicholasville, KY 40356

(833) 522-5227
https://kcalabs.com
KCA Lic.# P_0058

1060418-2020-TF-06-TFD-01

Sample ID: 2012KCA0759.2335

Cultivar: N/A

Matrix: Concentrates & Extracts

Type: Distillate

Sample Size:

Received: 12/07/2020

Completed: 12/16/2020

Batch#: TF-06-DIS

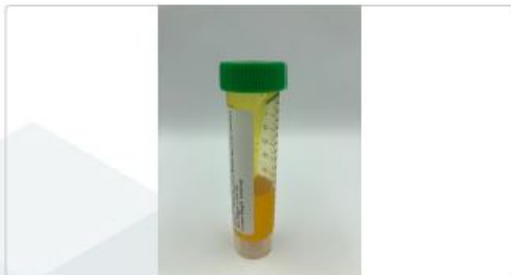
Client

Deschutes Labs

Lic.# AG-R1060418HH Oregon

2020 NW Industrial Park Rd

Prineville, OR 97754



Heavy Metals by ICP-MS

Complete

Analyte	LOD	LOQ	Mass
	$\mu\text{g/g}$	$\mu\text{g/g}$	$\mu\text{g/g}$
Arsenic	0.002	0.02	ND
Cadmium	0.001	0.02	ND
Lead	0.002	0.02	ND
Mercury	0.012	0.05	ND

Date Tested: 12/09/2020

LOD = Limit of Detection

LOQ = Limit of Quantitation

ND = None Detected



Wes Rogers

Wes Rogers
Principal Scientist
12/16/2020

This product or substance has been tested by KCA Laboratories using validated testing methodologies and a quality system. Values reported relate only to the product or substance tested. KCA Laboratories makes no claims as to the efficacy, safety or other risks associated with any detected or non-detected amounts of any substances reported herein. This Certificate of Analysis shall not be reproduced except in full, without the written approval of KCA Laboratories.



KCA Laboratories
232 North Plaza Drive
Nicholasville, KY 40356

(833) 522-5227
https://kcalabs.com
KDA Lic.# P_0058

1060418-2020-TF-06-TFD-01

Sample ID: 2012KCA0759.2335

Cultivar: N/A

Matrix: Concentrates & Extracts

Type: Distillate

Sample Size:

Received: 12/07/2020

Completed: 12/16/2020

Batch#: TF-06-DIS

Client:

Deschutes Labs

Lic.# AG-R1060418IHH Oregon

2020 NW Industrial Park Rd

Prineville, OR 97754

Pesticides by LCMS/MS & GCMS/MS

Complete

Analyte	LOD PPM	LOQ PPM	Mass PPM	Analyte	LOD PPM	LOQ PPM	Mass PPM
Abamectin	0.001	0.005	ND	Imidacloprid	0.001	0.005	ND
Acephate	0.001	0.005	ND	Kresoxim Methyl	0.001	0.005	ND
Acetamiprid	0.001	0.005	ND	Malathion	0.001	0.005	ND
Aldicarb	0.001	0.005	ND	Metaxalyl	0.001	0.005	ND
Azoxystrobin	0.001	0.005	ND	Methiocarb	0.001	0.005	ND
Bifenazate	0.001	0.005	ND	Methomyl	0.001	0.005	ND
Bifenthrin	0.001	0.005	ND	Mevinphos	0.001	0.005	ND
Boscalid	0.001	0.005	ND	Myclobutanil	0.001	0.005	ND
Carbaryl	0.001	0.005	ND	Naled	0.001	0.005	ND
Carbofuran	0.001	0.005	ND	Oxamyl	0.001	0.005	ND
Chlorantraniliprole	0.001	0.005	ND	Paclobutrazol	0.001	0.005	ND
Chlordane	0.001	0.005	ND	Parathion Methyl	0.001	0.005	ND
Chlorfenapyr	0.001	0.005	ND	Pentachloronitrobenzene	0.001	0.005	ND
Daminozide	0.001	0.005	ND	Phosmet	0.001	0.005	ND
Diazinon	0.001	0.005	ND	Piperonyl Butoxide	0.001	0.005	ND
Dimethoate	0.001	0.005	ND	Propiconazole	0.001	0.005	ND
Dimethomorph	0.001	0.005	ND	Propoxur	0.001	0.005	ND
Ethoprophos	0.001	0.005	ND	Pyridaben	0.001	0.005	ND
Etofenprox	0.001	0.005	ND	Spinetoram	0.001	0.005	ND
Etoazoxol	0.001	0.005	ND	Spinosad	0.001	0.005	ND
Fenoxycarb	0.001	0.005	ND	Spirotetramat	0.001	0.005	ND
Fenpyroximate	0.001	0.005	ND	Spiroxamine	0.001	0.005	ND
Fipronil	0.001	0.005	ND	Tebuconazole	0.001	0.005	ND
Flonicamid	0.001	0.005	ND	Thiacloprid	0.001	0.005	ND
Fludioxonil	0.001	0.005	ND	Thiamethoxam	0.001	0.005	ND
Hexythiazox	0.001	0.005	ND	Trifloxystrobin	0.001	0.005	ND
Imazalil	0.001	0.005	ND				

Date Tested: 12/09/2020
LOD = Limit of Detection
LOQ = Limit of Quantitation
ND = None Detected



Wes Rogers

Wes Rogers
Principal Scientist
12/16/2020

This product or substance has been tested by KCA Laboratories using validated testing methodologies and a quality system. Values reported relate only to the product or substance tested. KCA Laboratories makes no claims as to the efficacy, safety or other risks associated with any detected or non-detected amounts of any substances reported herein. This Certificate of Analysis shall not be reproduced except in full, without the written approval of KCA Laboratories.



KCA Laboratories
232 North Plaza Drive
Nicholasville, KY 40356

(833) 522-5227
https://kcalabs.com
KDA Lic# P_0058

Certificate of Analysis

4 of 4

1060418-2020-TF-06-TFD-01

Sample ID: 2012KCA0759.2335

Cultivar: N/A

Matrix: Concentrates & Extracts

Type: Distillate

Sample Size:

Received: 12/07/2020

Completed: 12/16/2020

Batch#: TF-06-DIS

Client:

Deschutes Labs

Lic# AG-R1060418HH Oregon

2020 NW Industrial Park Rd

Prineville, OR 97754

Residual Solvents by HS-GC/MS

Complete

Analyte	LOD	LOQ	Mass	Analyte	LOD	LOQ	Mass
	PPM	PPM	PPM		PPM	PPM	PPM
Acetone	0.5	1	ND	Heptane	0.5	1	<LOQ
Acetonitrile	0.5	1	ND	Isobutane	0.5	1	ND
Benzene	0.5	1	ND	Isopropanol	0.5	1	ND
Butane	0.5	1	ND	Isopropyl-Acetate	0.5	1	ND
1-Butanol	0.5	1	ND	Methanol	0.5	1	ND
2-Butanol	0.5	1	ND	2-Methyl-Butane	0.5	1	ND
2-Butanone	0.5	1	ND	2-Methyl-Pentane	0.5	1	ND
Chloroform	0.5	1	ND	3-Methyl-Pentane	0.5	1	ND
Cumene	0.5	1	ND	Methylene-Chloride	0.5	1	ND
Cyclohexane	0.5	1	ND	N,N-Dimethyl-Acetamide	0.5	1	ND
1,2-Dichloro-Ethane	0.5	1	ND	N,N-Dimethyl-Formamide	0.5	1	ND
1,2-Dimethoxy-Ethane	0.5	1	ND	Neopentane	0.5	1	ND
2,2-Dimethyl-Butane	0.5	1	ND	1-Pentanol	0.5	1	ND
2,3-Dimethyl-Butane	0.5	1	ND	Propane	0.5	1	ND
Dimethyl sulfoxide	0.5	1	ND	1-Propanol	0.5	1	ND
1,4-Dioxane	0.5	1	ND	Pyridine	0.5	1	ND
Ethanol	0.5	1	2.465	Sulfolane	0.5	1	ND
2-Ethoxy-Ethanol	0.5	1	ND	Tetrahydrofuran	0.5	1	ND
Ethyl-Acetate	0.5	1	ND	Toluene	0.5	1	ND
Ethyl-Benzene	0.5	1	ND	Trichloroethene	0.5	1	ND
Ethyl-Ether	0.5	1	ND	Xylenes	0.5	1	ND
Ethylene glycol	0.5	1	ND	n-Hexane	0.5	1	3.549
Ethylene oxide	0.5	1	ND	n-Pentane	0.5	1	ND

Date Tested: 12/09/2020
LOD = Limit of Detection
LOQ = Limit of Quantitation
ND = None Detected



Wes Rogers

Wes Rogers
Principal Scientist
12/16/2020

This product or substance has been tested by KCA Laboratories using validated testing methodologies and a quality system. Values reported relate only to the product or substance tested. KCA Laboratories makes no claims as to the efficacy, safety or other risks associated with any detected or non-detected amounts of any substances reported herein. This Certificate of Analysis shall not be reproduced except in full, without the written approval of KCA Laboratories.